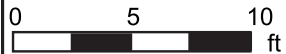
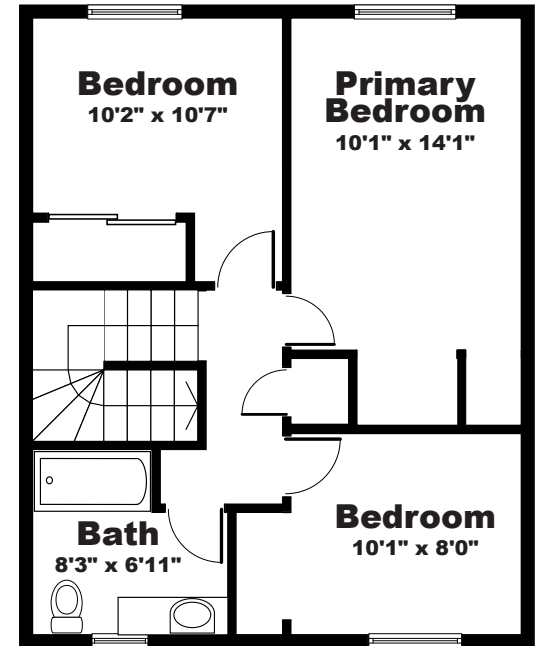
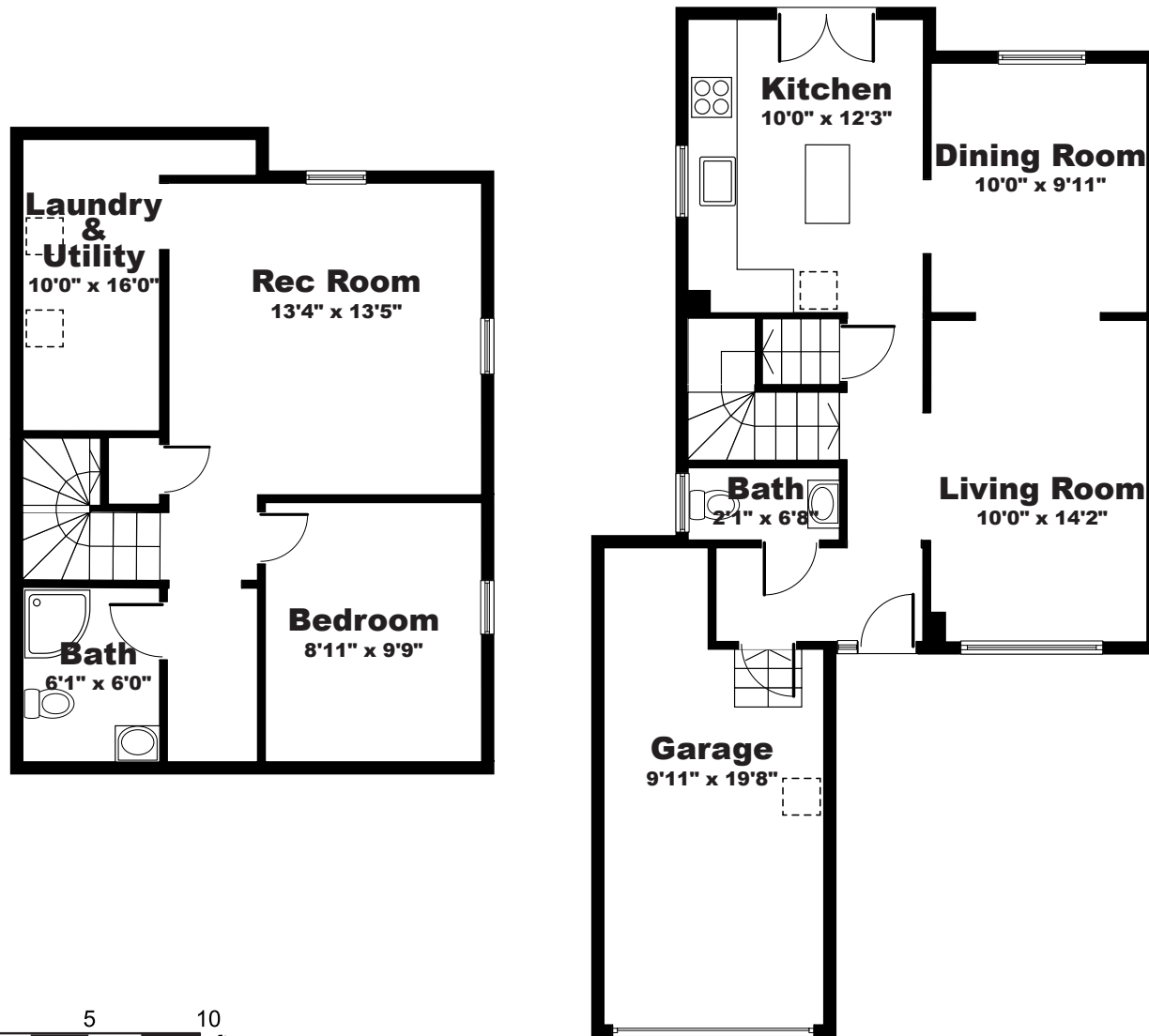


# 5 Eastview Cres

1,634 sq ft Total

1,829 sq ft Total (incl. Garage)



All room dimensions and floor areas must be considered approximate and are subject to independent verification.

# 5 Eastview Cres

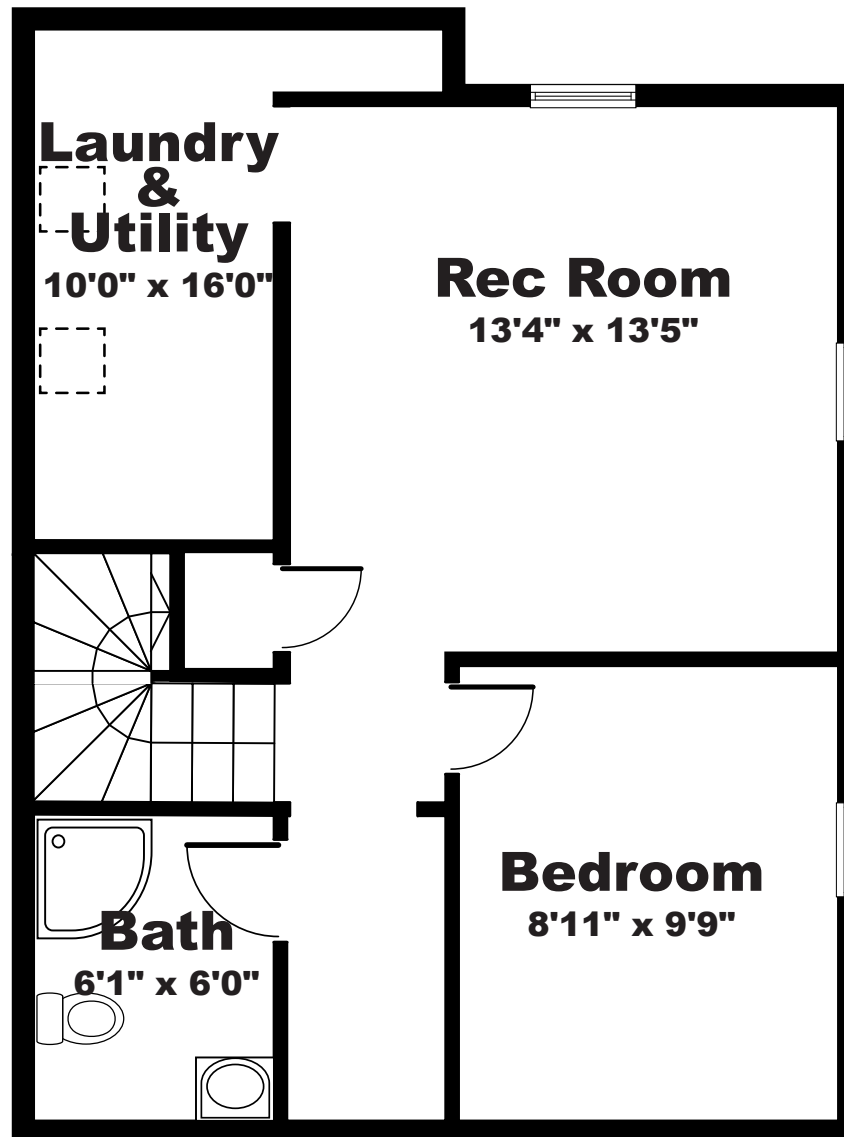
Floor 1 of 3

## FINISHED BASEMENT

552 sq ft

1,634 sq ft Total

1,829 sq ft Total (incl. Garage)



All room dimensions and floor areas must be considered approximate and are subject to independent verification.

# 5 Eastview Cres

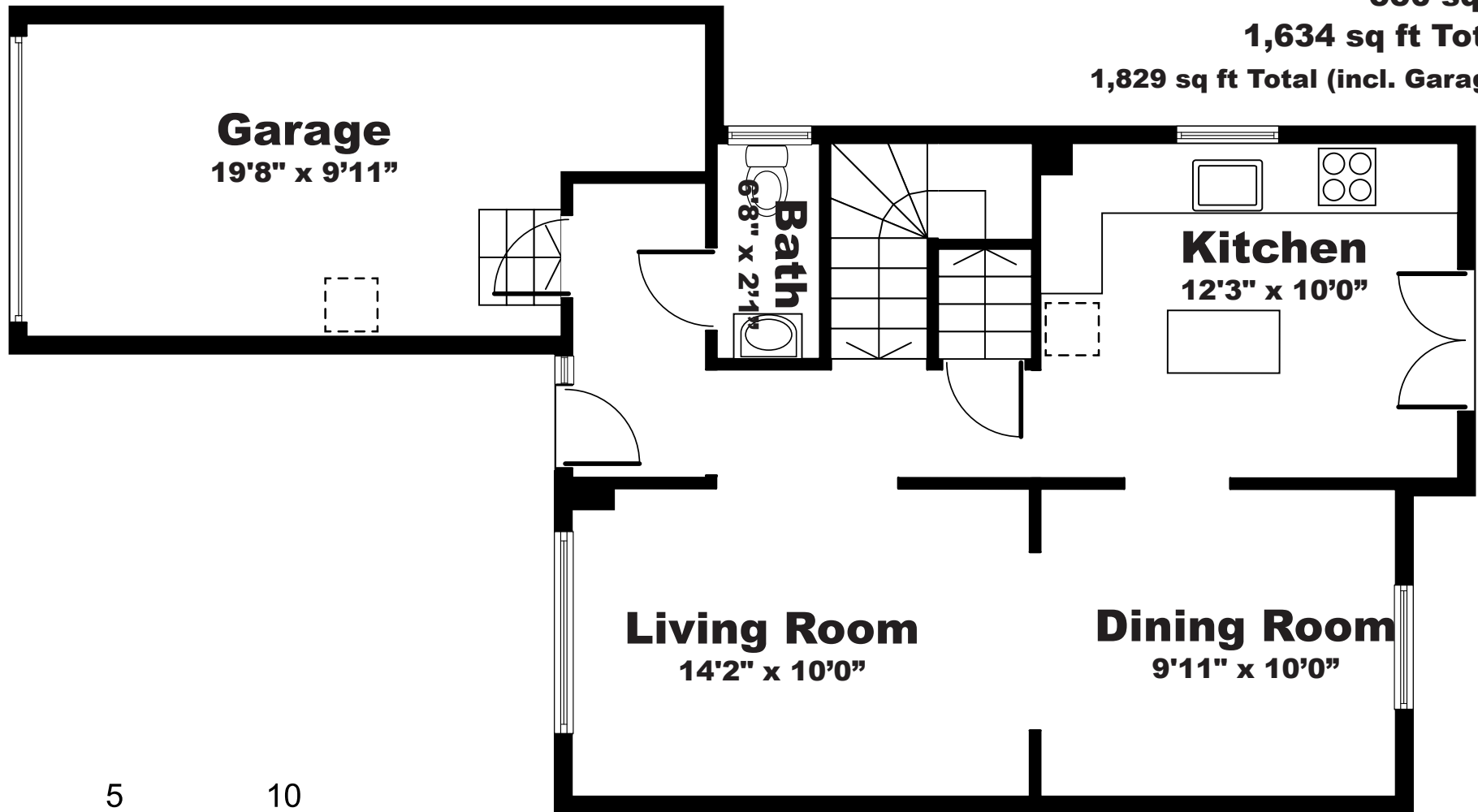
Floor 2 of 3

## GROUND FLOOR

550 sq ft

1,634 sq ft Total

1,829 sq ft Total (incl. Garage)



All room dimensions and floor areas must be considered approximate and are subject to independent verification.

# 5 Eastview Cres

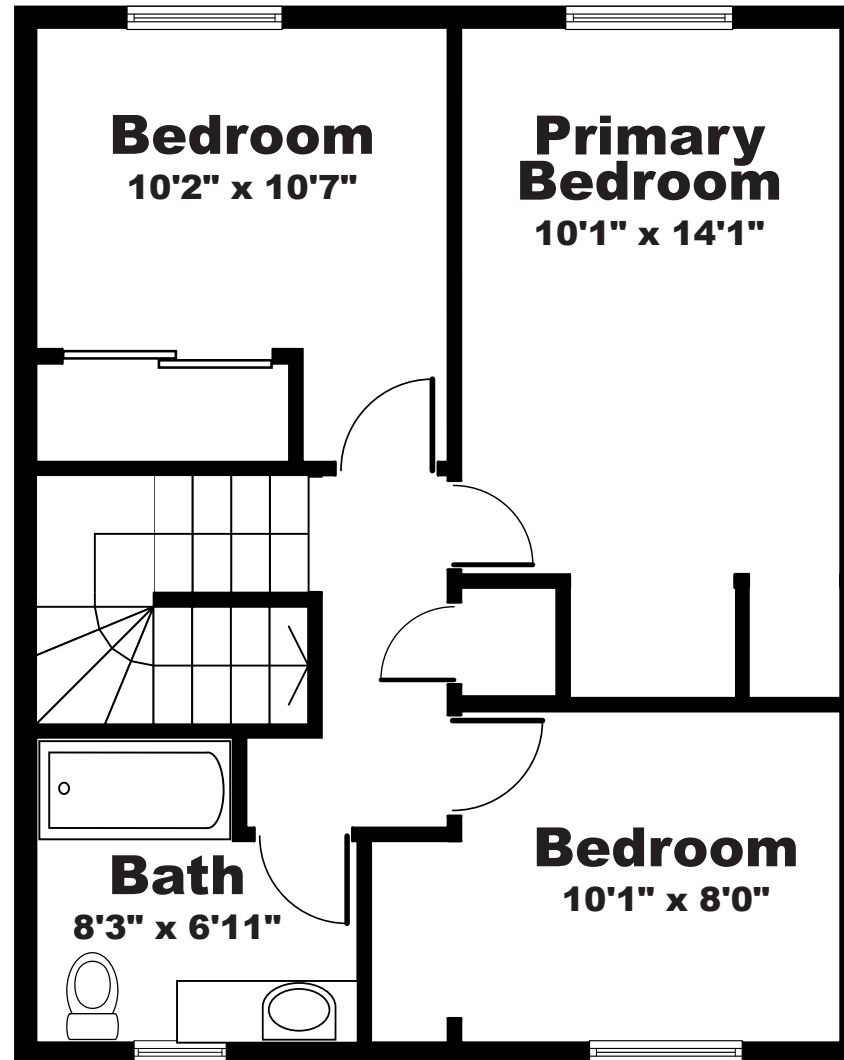
Floor 3 of 3

## UPSTAIRS FLOOR

532 sq ft

1,634 sq ft Total

1,829 sq ft Total (incl. Garage)



All room dimensions and floor areas must be considered approximate and are subject to independent verification.